



20-50-01
Combined UHF COMMS
High Power LINK16 Antenna
225 to 450 / 960 to 1220 MHz

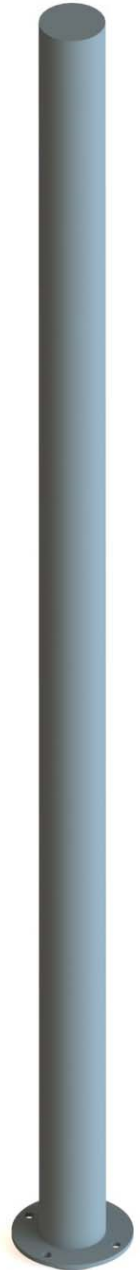
FEATURES

- **Rugged Construction**
- **Covers EPLRS, JTIDS, MIDS, LINK16**
- **Standard CECOM mount**
- **Suitable for Mast and Fixed Installations**
- **2KW Peak Power for LINK16**
- **Designed to MIL-STD-810 environmental**
- **Ground plane independent**
- **Less than 72" (1829mm) Height**
- **Foamed in place elements for reliability**

The 20-50-01 is a combined, stacked dipole array intended for use with LINK16, MIDS, JTIDS data link and UHF Communications radios including EPLRS.

The UHF element is an end fed dipole above which is stacked an isolated high gain L-band dipole array. The entire assembly is housed in a rugged fiberglass support tube fitted with a 4 hole CECOM mounting base.

Gain up to +8dBi is provided for LINK16 with +2dBi average over the UHF band. Separate N-type and TNC (female) connectors are provided for LINK16 and UHF respectively.



Cooper Antennas Ltd for non-USA customers
Thames Industrial Estate, Unit K, Fieldhouse Lane,
Buckinghamshire SL7 1TB, UK
Tel: +44 (0) 1628 482 360
Email: sales@cooperantennas.com
www.cooperantennas.com

**Australian Representatives**
ROJONE, PTY LTD.
Tel: 02 9829 1555
E: sales@rojone.com.au
www.rojone.com.au

SPECIFICATIONS

Cooper Antennas Model 20-50-01

Combined UHF COMMS High Power LINK16 Antenna

ELECTRICAL

Frequency	225 - 450 and 960 - 1220 MHz				
Impedance	50 Ohms (nominal)				
VSWR	≤ 2.5:1 UHF ≤ 2.0:1 L- Band				
Gain	+6 to +8dBi L- Band +2dBi average UHF				
Isolation	≥30dB				
Polarization	Vertical				
Radiation	Omni-directional in azimuth				
Power	<table style="display: inline-table; vertical-align: middle;"> <tr> <td style="padding-right: 10px;">2KW Peak</td> <td rowspan="2" style="font-size: 3em; vertical-align: middle;">}</td> <td rowspan="2" style="padding-left: 10px;">L- Band</td> </tr> <tr> <td>500 watts average</td> </tr> </table> 50 watts UHF	2KW Peak	}	L- Band	500 watts average
2KW Peak	}	L- Band			
500 watts average					

MECHANICAL

Total Height	72 inches max (1829mm)
Element Diameter	3 inches (76mm)
Weight	10lbs max (4.54kg)
Mounting	4 holes on 4.5 inches (114mm) circle to CECOM standard pattern

FINISH

Antenna	Lusterless grey urethane
---------	--------------------------

Other finish options available. Please specify finish required when ordering

Note: Cooper Antennas Ltd has a policy of continuous product improvement and data herein is therefore subject to change. Please check with Cooper Antennas Ltd that this data sheet is at latest issue before initiating contract activity.